

SAO 164
Site Selection Assignment

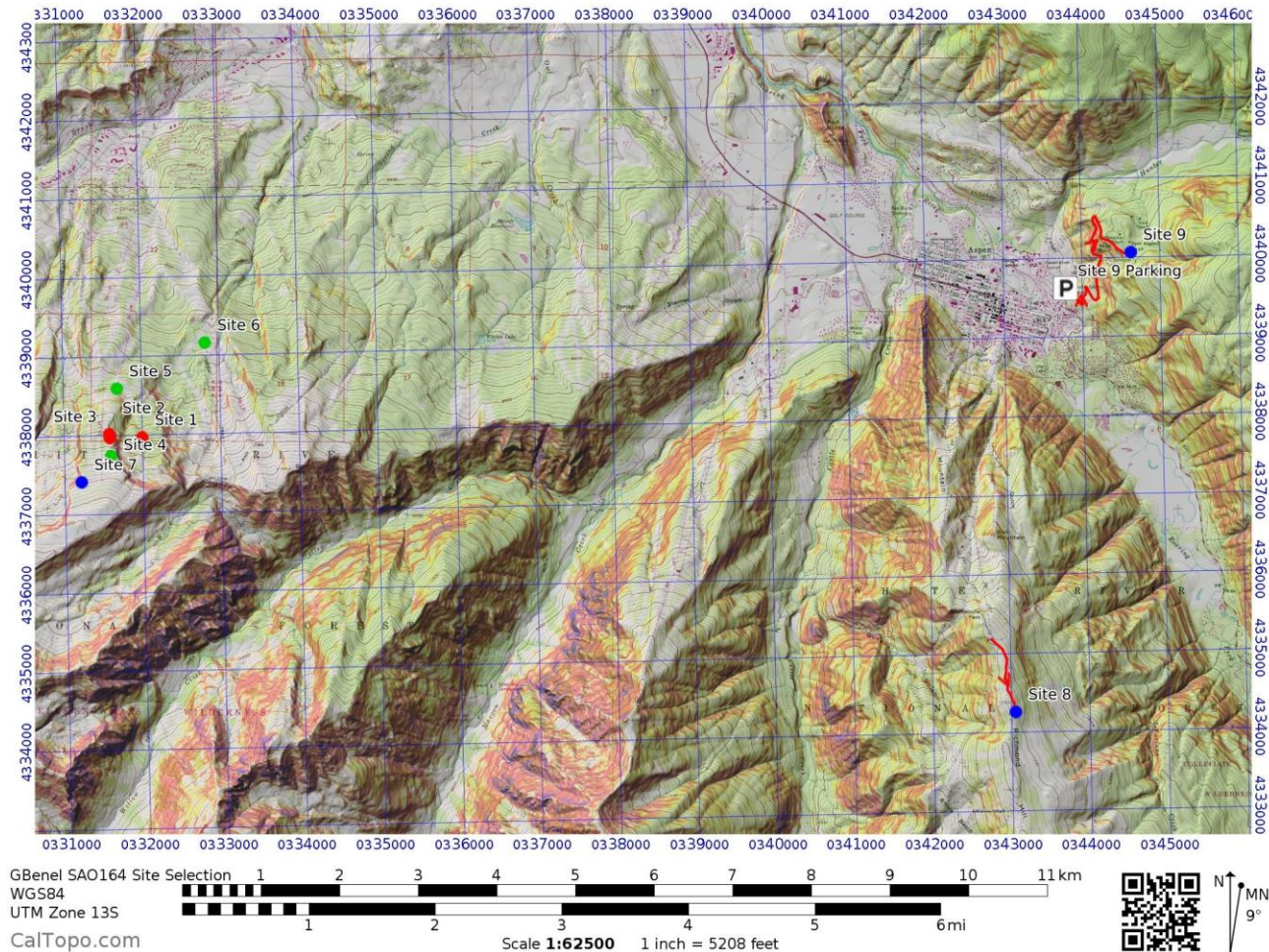
Gabriel Benel
November 2017

Site Selection Summary

SAO-164 STUDY SITE DATA		UTM Coordinates			Observer: Gabi Benel			Module							Site Notes:		
Site	Location Description	Zone	UTME	UTMN	Slope Angle (deg)	Aspect	Azimuth (deg)	Ground Cover	Altitude (ft)	2	3	4	5	6		7	
Sites 1-3: Slope Scale																	
1	"Ampitheatre" off of High Alpine in Snowmass	13S	331997	4337964	34	NE	40	scree	10,994	x	x		x	x	x	In Snowmass Ski Area, in closed terrain. "snowpit site 12" in gps	
2	"Castle Glades" in Snowmass off of High Alpine	13S	331584	4337965	31	NNE	31	grass and tree stumps	11,322	x	x		x	x	x	In Snowmass Ski Area, in closed terrain. "snowpit site 14" in gps	
3	"Castle Glades" in Snowmass off of High Alpine	13S	331582	4338012	32	NNE	31	grass and tree stumps	11,299	x	x		x	x	x	In Snowmass Ski Area, in closed terrain. "snowpit site 13" in gps	
Sites 4-6: Terrain Scale																	
4	Above "TLS" in Snowmass off of High Alpine	13S	331597	4337734	8	N	0	grass	11,515				x			In Snowmass Ski Area, above the TLS snow study site. Below the "Possible" gate. "snowpit site 17" in gps	
5	Bottom of "The Edge" in Snowmass	13S	331688	4338588	19	E	88	grass with small bushes	10,574				x			Near the top of the old lift line at the bottom of The Edge. "snowpit site 11" in gps	
6	On "Elk Camp Meadows" in Snowmass.	13S	332824	4339153	8	SSE	160	Short grass and dirt	9,911				x			In the newer area of Elk Camp Meadows. Can move around a little bit to get different aspects if desired. "snowpit site 8" in gps.	
Sites 7-9: Local Study Area Scale																	
7	Below "Huff Puff Pass" in Snowmass.	13S	331216	4337416	11	WNW	306	low grass, some small rocks	11,788						x	x	Below the catwalk towards Upper Green Cabin. "Snowpit site 18" on gps
8	Richmond Ridge, Top of Aspen Mountain	13S	343056	4334250	17	ENE	75	low grass and small rocks	11,315						x	x	Just below Richmond Ridge. Access through gate from the top of Aspen Mountain. "Snowpit site 3" in gps
9	Top of Smuggler Mountain - near old mine remains	13S	344637	4340058	6	WNW	285	dirt	9,160						x	x	long-ish skin to the top of Smuggler Mountain, past the observation deck, to the end of the "Behind the Sign" trail.
Backup Sites																	
10	Richmond Ridge, Top of Aspen Mountain	13S	342942	4334447	7	WSW	240	Grass	11,374								"Snowpit site 2" in gps
11	Richmond Ridge, Top of Aspen Mountain	13S	343023	4334177	12	SSE	167	grass	11,305								"Snowpit site 4" in gps
12	Richmond Ridge, Top of Aspen Mountain	13S	342958	4334882	10	NE	50	grass and small stalks	11,210								"Snowpit site 1" in gps
13	On Snowmass, below the "Landing Strip"	13S	331054	4339771	10	SSW	210	grass and some rocks	9,658								"Snowpit site 22" on gps
14	On Snowmass, Upper Green Cabin	13S	331039	4337650	10	N	0	small rocks	11,410								"Snowpit site 20" on GPS
15	On Snowmass, bottom skier's right of the edge	13S	331755	4338669	26	NW	310	grass and small rocks	10,528								"Snowpit site 10" on GPS

Caltopo Map

- <https://caltopo.com/m/U1M5>



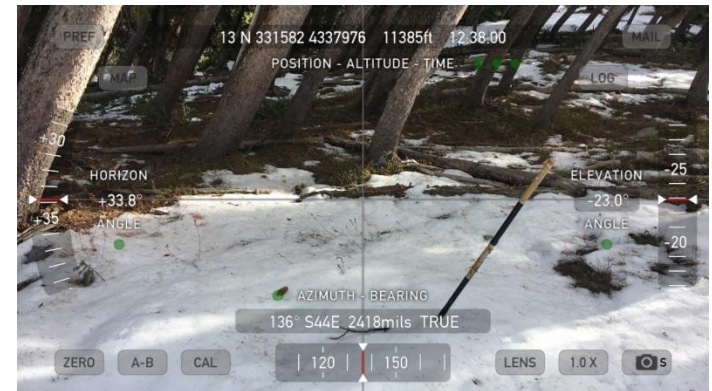
Site 1 – “Amphitheatre”

- On the Snowmass Ski Area, in the “Amphitheatre” Area
- This is closed terrain on the ski area. Access is either through skiing down through some gladed terrain or skinning up from below.



Site 2 – “Castle Glades”

- On the Snowmass Ski Area, in the “Castle Glades” Area
- This is closed terrain on the ski area. Access is from leaving a groomed run nearby



Site 3 – “Castle Glades”

- On the Snowmass Ski Area, in the “Castle Glades” Area
- This is closed terrain on the ski area. Access is from leaving a groomed run nearby



Site 4 – above “TLS”

- On the Snowmass Ski Area, in the “High Alpine” area
- This is near the High Alpine Ski Patrol hut. Access is from leaving a groomed run nearby. It is above the snow study site “TLS”



Site 5 – Bottom of “The Edge”

- On the Snowmass Ski Area, in the “High Alpine” area
- This is near the High Alpine Ski Patrol hut. Access is from leaving a groomed run nearby.



Site 6 – “Elk Camp Meadows”

- On the Snowmass Ski Area, in the “Elk Camp” area



Site 7 – Below “Huff Puff Pass”

- On the Snowmass Ski Area, in the “High Alpine” area
- This is near the High Alpine Ski Patrol hut. Access is from leaving a groomed run nearby.



Site 8 – Richmond Ridge, Aspen Mtn

- At the top of Aspen Mountain.
- Access is by riding the Aspen Gondola to the top of the mountain and then leaving the ski area through a marked gate
- A short skin (~10 mins) along a snow packed road on Richmond Ridge (commonly used by snowmobiles) brings you to the site.



Gate leaving the Aspen ski area, behind the top of the gondola.



Site 9

- Across the valley from Aspen Mountain.
- Access road (county dirt road) may be dirt for the beginning as it is South facing and gets a lot of sun
- Access time is at least an hour to the site



When I returned to the site to take photographs, a truck was left right near where I surveyed!
I returned to the site later and the truck was gone, but I did not have a camera with me.
The snowpit will be directly behind where the truck sits.